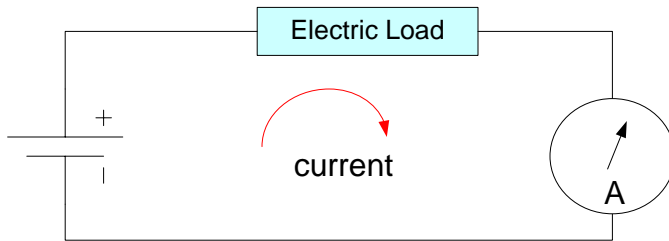
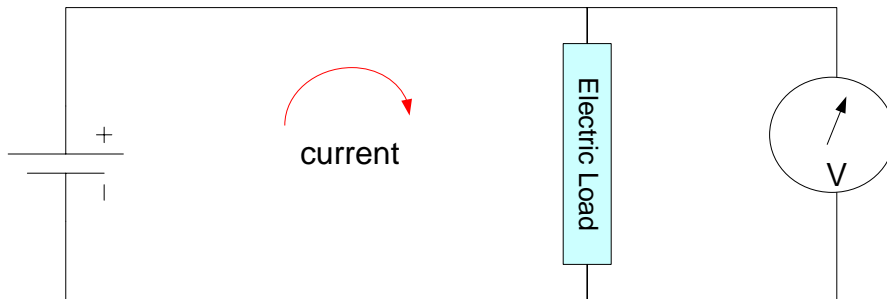


DC Amp-meter connection



An amp-meter measures the current flowing through an electrical circuit. It is connected in series with the load and the supply. In order for the pointer to deflect in the right direction the polarity of the connection must be observed.

DC Volt-meter connection



A volt-meter measures the voltage across a load. It is connected in parallel with the load. In order for the pointer to deflect in the right direction the polarity of the connection must be observed.